

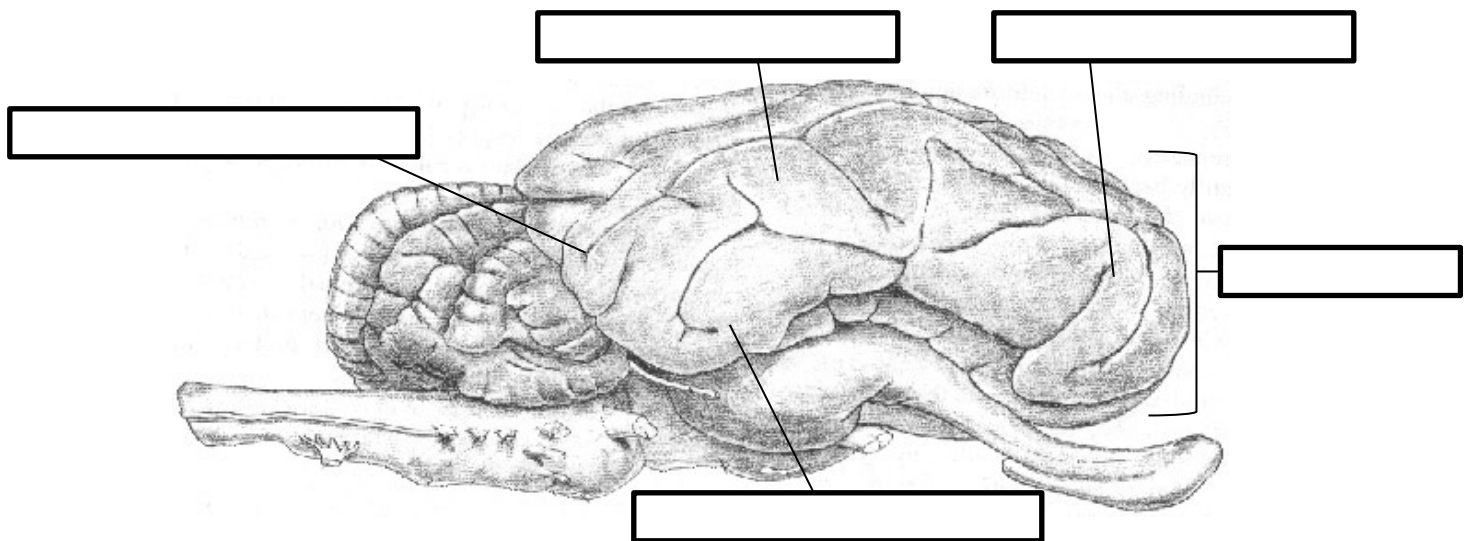
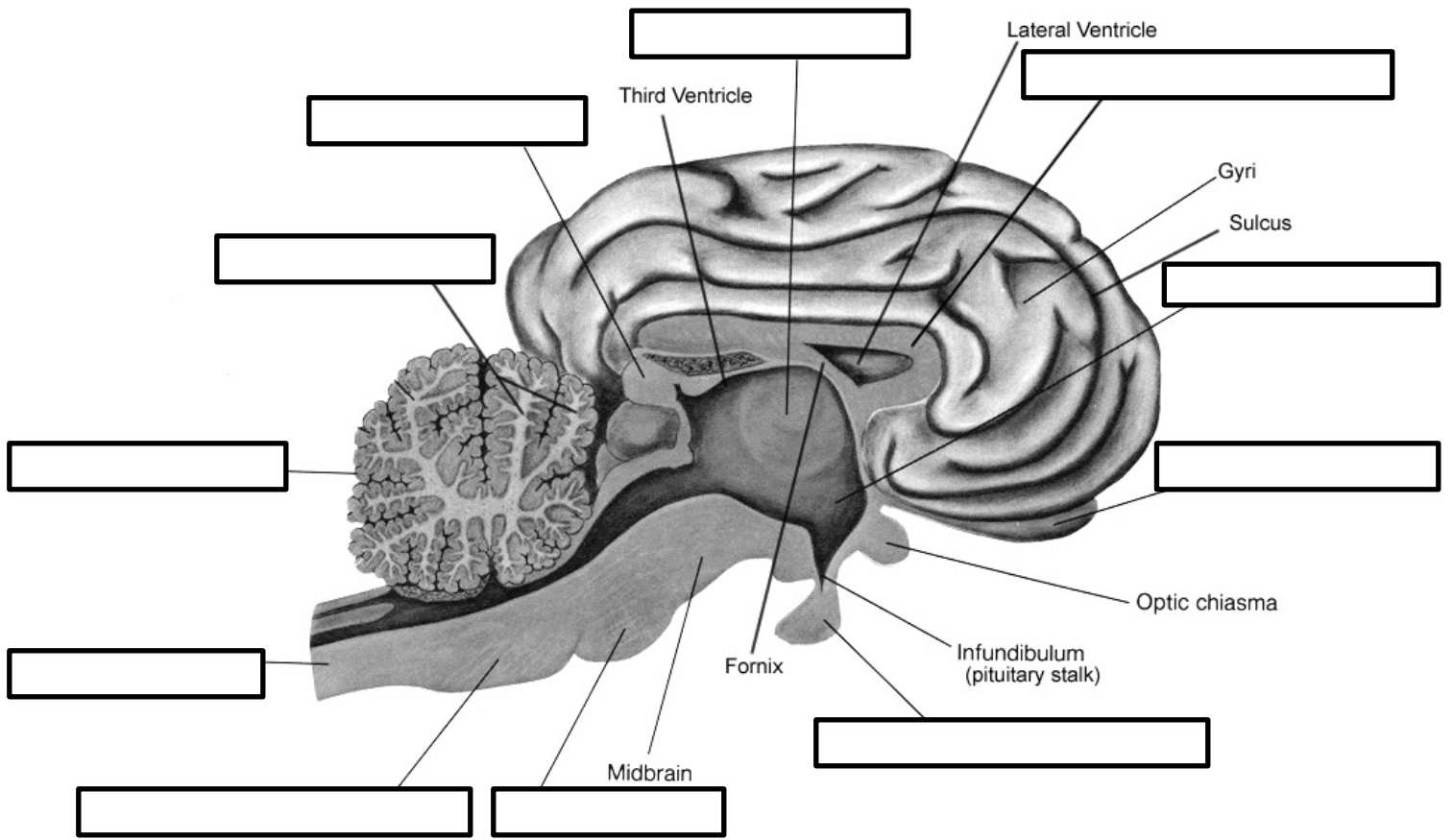
Brain Dissection (must be able to label *and* know the functions of the * words)

Arbor vitae
Cerebellum*
Cerebrum
Corpus callosum*
Frontal lobe*
Grey matter

Hypothalamus*
Medulla oblongata*
Occipital lobe*
Olfactory bulbs
Parietal lobe*
Pineal gland

Pituitary gland
Pons*
Spinal cord*
Temporal lobe*
Thalamus*
White matter

Label the diagrams below:



Match the parts of the brain to their functions.

- | | |
|--------------------------|--|
| ___ 1. Amygdala | A. filters information between the two hemispheres |
| ___ 2. Cerebellum | B. thinking and memory |
| ___ 3. Corpus callosum | C. sight |
| ___ 4. Frontal lobe | D. judgment, personality, speaking, planning, abstract thinking |
| ___ 5. Hippocampus | E. coordinates automatic function and relays information between the cerebrum and cerebellum |
| ___ 6. Hypothalamus | F. automatically controls heart beat and breathing |
| ___ 7. Medulla oblongata | G. take in sensory information related to seeing, hearing, tasting and touching |
| ___ 8. Occipital lobe | H. non-verbal learning and memory, perception of time, modulating emotions |
| ___ 9. Parietal lobe | I. memory consolidation and emotion |
| ___ 10. Pons | J. regulates body temperature, circadian rhythms, hunger, helps govern endocrine system |
| ___ 11. Spinal cord | K. comprehension of hearing and speech |
| ___ 12. Temporal lobe | L. sense of touch and body position |
| ___ 13. Thalamus | M. speech production and language processing |
| ___ 14. Broca's Area | N. connection to brain and body, some reflexes |