

Digestive System

| Feature | Function | Label |
|--------------------------|--|-------|
| Masseter Muscle | Moves the jaw for chewing food | |
| Salivary Glands | makes saliva to help food move easily down the esophagus | |
| Pharynx* | passageway for the respiratory and digestive systems | |
| Papillae (taste buds) | helps taste food | |
| Soft Palate* | Closes nasal passages during swallowing | |
| Hard Palate* | used for suckling (and speech in humans) | |
| Esophagus* | Carries food, liquids and saliva to the stomach | |
| Liver* | aids in digestion, distributes nutrients, removes toxins + produces certain proteins | |
| Small Intestine* | absorbs nutrients from food | |
| Large Intestine (colon)* | reabsorb water | |
| Cecum | absorb fluids and salts, helps digest plant matter | |
| Gall Bladder* | stores bile, which breaks down fats | |
| Pancreas* | Secretes hormones and digestive enzymes | |
| Stomach* | crushes and liquifies food | |
| Mesentery* | Keeps organs in place, shelters blood vessels | |
| Rectum* | muscular ring that keeps the intestine sealed shut | |
| Anus* | opening to dispose of feces | |

Respiratory System

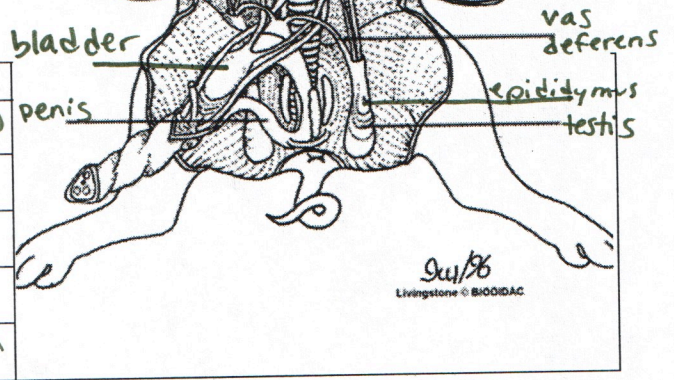
| Feature | Function | Label |
|------------|--|-------|
| Diaphragm* | helps inflate and deflate the lungs | |
| Trachea* | air passageway to the lungs | |
| Larynx* | aka voice box, produces sound | |
| Epiglottis | blocks off food and liquids from entering the trachea | |
| Pharynx* | passageway for the respiratory and digestive system | |
| Lungs* | gas exchange between the outside world and blood cells | |

Urogenital (Reproductive and Excretory)

| Feature | Function | Label |
|------------------|--|--|
| Kidneys* | removes wastes from the blood + regulates water levels | <p>Labels: Kidney, Ureter, bladder, penis, vas deferens, epididymis, testis</p> <p>9/1/06 Livingstone © BIODAC</p> |
| Ureter* | carries urine from kidney to bladder | |
| Urinary Bladder* | stores urine | |
| Urethra | allows urine to leave from the urinary bladder | |

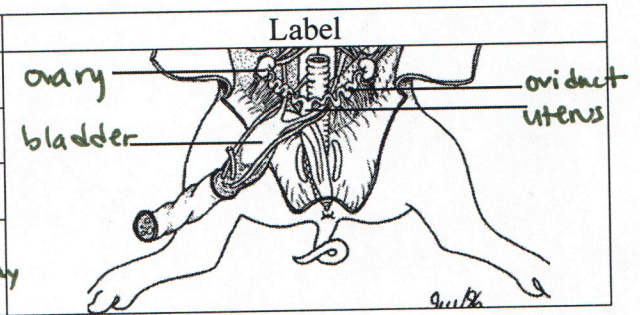
Male Reproductive System

| Feature | Function |
|---------------|---|
| Scrotal Sacs | holds testes outside the body to keep sperm cool |
| Testis* | produce sperm and hormones |
| Epididymis* | stores and transports sperm |
| Vas Deferens* | carries sperm from epididymis to ejaculatory duct ejaculatory duct |
| Penis* | removal of urine and insertion of sperm into a female |



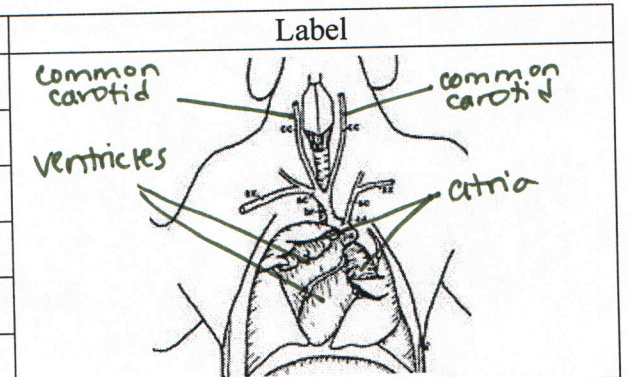
Female Reproductive System

| Feature | Function |
|----------|---|
| Ovaries* | produce eggs and hormones |
| Oviduct* | transports eggs to the uterus |
| Uterus* | receives, retains and nourishes fertilized eggs |
| Vagina | receptacle for penis, outlet for menstrual blood, passageway for birthing offspring |



Circulatory System

| Feature | Function |
|-------------------|---|
| Atria* } heart | pumps blood to ventricles |
| Ventricles* } | pumps blood to lungs (right) and the body (left) |
| Pericardium | protection and lubrication of the heart |
| Common Carotid* | carries blood to the neck & head |
| Jugular | returns blood from the neck and head to the heart |
| Umbilical Vessels | gas exchange through the placenta while in uterus |



Miscellaneous Systems

| Feature | Function |
|-------------------|---|
| Thyroid* | hormone production |
| Spleen (on front) | destroys old blood cells |
| Nipples | in females, it delivers milk to the offspring |

